



Performance



Accessibility



Best Practices



SEO



Performance

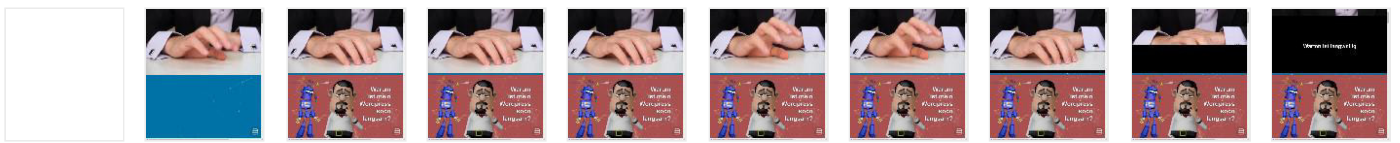
Metrics



First Contentful Paint	0.3 s	Time to Interactive	0.3 s
Speed Index	1.2 s	Total Blocking Time	0 ms
Largest Contentful Paint	0.4 s	Cumulative Layout Shift	0.528

Values are estimated and may vary. The [performance score is calculated](#) directly from these metrics. [See calculator.](#)

[View Original Trace](#)



Show audits relevant to: All FCP LCP TBT CLS

Diagnostics — More information about the performance of your application. These numbers don't [directly affect](#) the Performance score.

- Avoid enormous network payloads — Total size was 3,855 KiB
- Avoid chaining critical requests — 3 chains found
- Keep request counts low and transfer sizes small — 33 requests • 3,853 KiB
- Largest Contentful Paint element — 1 element found
- Avoid large layout shifts — 3 elements found

Passed audits (32)



Accessibility

These checks highlight opportunities to [improve the accessibility of your web app](#). Only a subset of accessibility issues can be automatically detected so manual testing is also encouraged.

Additional items to manually check (10) — These items address areas which an automated testing tool cannot cover. Learn more in our guide on [conducting an accessibility review](#). ▼

Passed audits (11) ▼

Not applicable (33) ▼



Best Practices

Passed audits (17) ▼

Not applicable (1) ▼



SEO

These checks ensure that your page is optimized for search engine results ranking. There are additional factors Lighthouse does not check that may affect your search ranking. [Learn more](#).

Additional items to manually check (1) — Run these additional validators on your site to check additional SEO best practices. ▼

Passed audits (12) ▼

Runtime Settings

URL	https://willbraender.de/
Fetch Time	Aug 30, 2021, 4:41 PM GMT+2
Device	Emulated Desktop
Network throttling	40 ms TCP RTT, 10,240 Kbps throughput (Simulated)
CPU throttling	1x slowdown (Simulated)
Channel	devtools
User agent (host)	Mozilla/5.0 (Windows NT 10.0; Win64; x64) AppleWebKit/537.36 (KHTML, like Gecko) Chrome/92.0.4515.159 Safari/537.36
User agent (network)	Mozilla/5.0 (Macintosh; Intel Mac OS X 10_14_6) AppleWebKit/537.36 (KHTML, like Gecko) Chrome/90.0.4420.0 Safari/537.36 Chrome-Lighthouse
CPU/Memory Power	1163
Axe version	4.1.3

Generated by **Lighthouse** 7.5.0 | [File an issue](#)